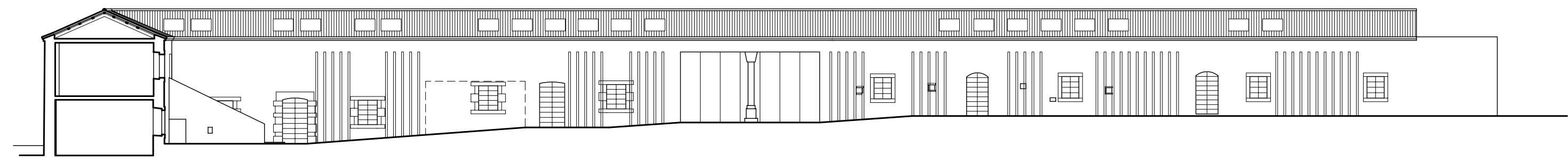


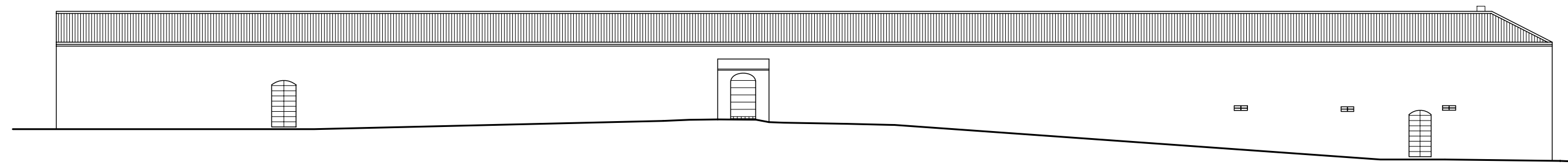
2000

UNUTRAŠNJE PROČELJE SJEVEROZAPADNOG DIJELA SKLOPA (A-A)



1000

VANJSKO PROČELJE SJEVEROZAPADNOG DIJELA SKLOPA (B-B)

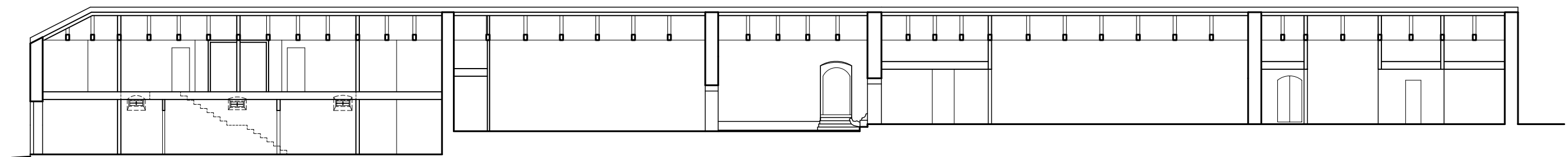


200

0

200

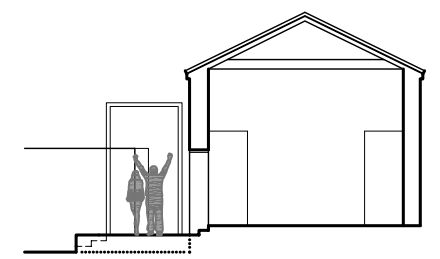
UZDUŽNI PRESJEK (1-1)



1000

2000

POPREČNI PRESJEK (2-2)



4000

3000

2000

1000

200

0

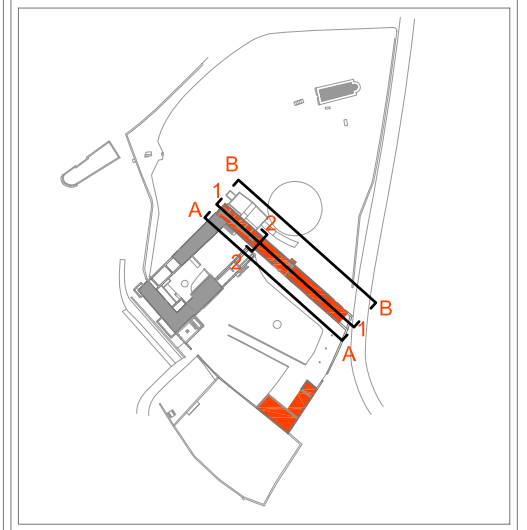
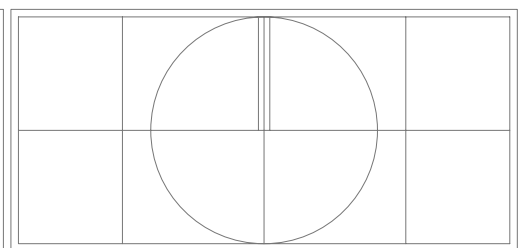
200

1000

2000

3000

4000



SVEUČILIŠTE U ZAGREBU	
ARHITEKTONSKI FAKULTET	
HR - 10000 ZAGREB, KAČIČEVA 26	
građevina	Kula Stojana Jankovića
adresa	Islam Grčki
k.o., k.č.	Islam Grčki, 35 i 39
faza	idejno rješenje
sadržaj	idejno rješenje - varijanta 2 pročelja, presjeci 1-1, 2-2
autor	mr.sc. Alan Braun, dipl.ing.arh.
suradnik	Mladen Cvitanović, dipl.ing.arh.
mjerilo	1:200
list	13
datum	svibanj, 2013.